



Automatic Cow  
Brush  
Assembly &  
User Manual

## CONTENTS

User Manual Description	1
Points To Be Considered During Preparation, Loading and Shipping	1
Points To Be Considered During Machine Installation	1
Attention and Safety	1
Specifications	2
Technical Dimensions	3
Assembly Scheme	4-5
Card Scheme and Features	6
Electronic Card Assembly Scheme	6
Card Scheme Features	7
Matters Needing Attention	7
Machine Installation	8
Pole Mounting	8
Troubleshooting (FAQ)	9
Machine Control Table	10
Warranty Conditions	11
General Issues Except of the Warranty	11
Warranty Certificate	12

## USER MANUAL DESCRIPTION

The instruction manual is part of the automatic scratching brush and was prepared by Remak Redüktör Makina Sanayi Ltd. Sanayi.

The main purpose of the User Manual; To ensure that the machine is operated in accordance with the rules specified in the manual in terms of user recognition and safety of the user. All applications made outside of the user manual instructions will cause the device to be out of warranty.

For this, users must keep the "User's Manual" for the lifetime of the machine.

## POINTS TO BE CONSIDERED DURING PREPARATION, LOADING AND SHIPPING

Care must be taken during the loading and transportation of the machine. Attention should be paid to impacts, friction and scratches. Appropriate equipment should be used for loading and unloading machines on the transport vehicle. Appropriate equipment should be used for loading and unloading machines on the transport vehicle.

## POINTS TO BE CONSIDERED DURING MACHINE INSTALLATION

The installation of the machine should be carried out by technically competent persons with the instructions specified in the User Manual. Otherwise, the manufacturer does not accept any responsibility as a result of the troubles.

## ATTENTION AND SAFETY

All operations carried out during the assembly of the machine should be done with Occupational Safety measures taken. Operation of the machine should be carried out by authorized persons with appropriate equipment. It is delivered ready on all electrical installations of the machine. Making any changes or interfering with the system carries the risk of damaging the person or the machine, as it will destroy the existing system.

## SPECIFICATIONS



### Gearbox

Remak Gearbox RM5 Monoblock Body  
Gears are threaded in order to work quietly and smoothly.

Cycle: 28-30d / rpm

Shaft Diameter: 25mm

### Electrical Motor

0.18 KW Monophase motor with high energy efficiency in accordance with IE2 standards

1400 rpm

Voltage: 220-240V

### Chassis

Special laser cut sheet and special galvanized coating selected according to load capacity

### Brush

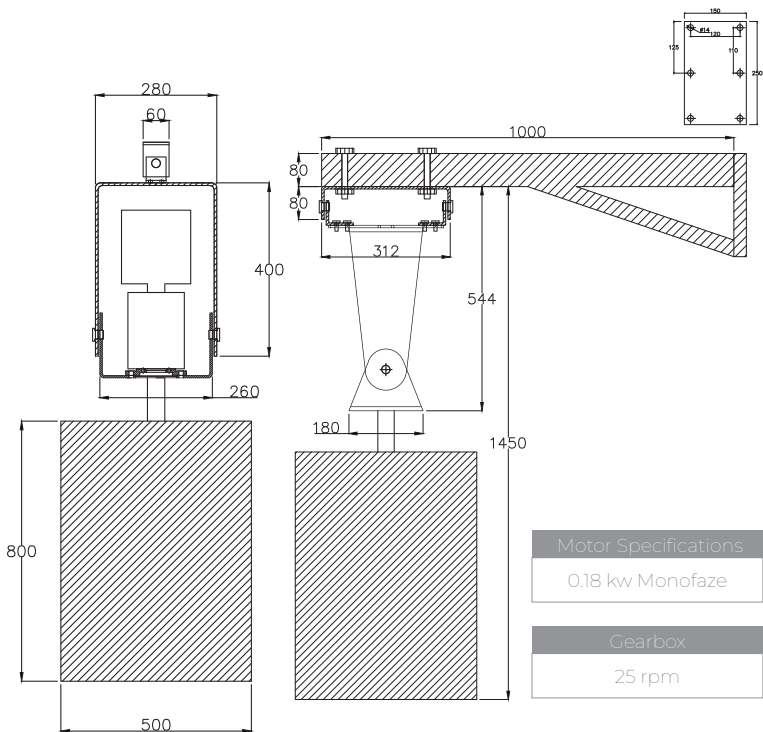
Ergonomic shape designed for animal body

Dimensions: 800x500 V Type

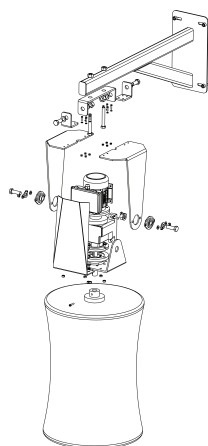
Material: POLYPROPYLENE PASTIC

CLAY (It will not harm the animal skin)

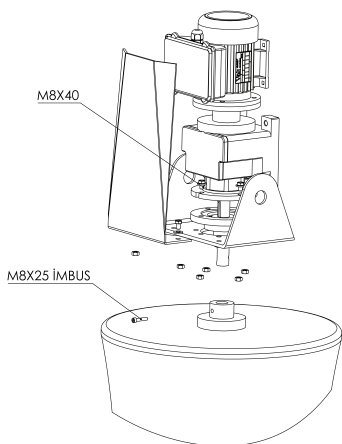
## TECHNICAL DIMENSIONS



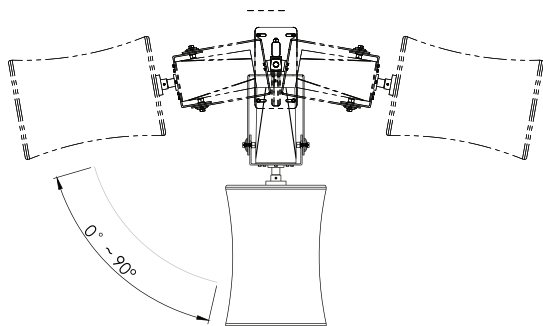
## ASSEMBLY SCHEME



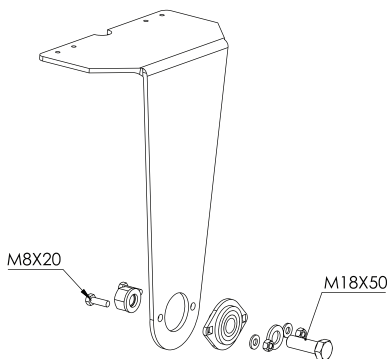
Exploded View



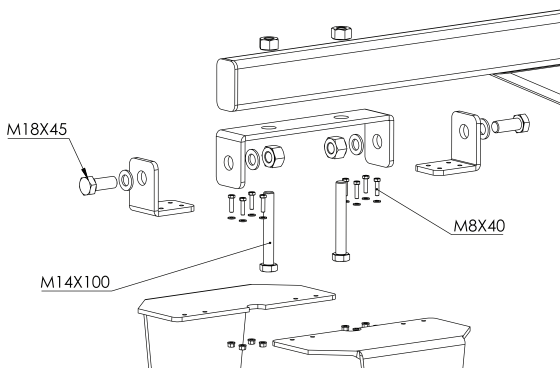
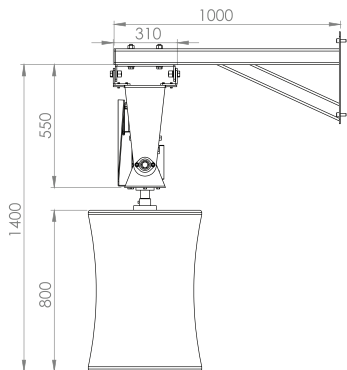
Step 1



## ASSEMBLY SCHEME



Step 2



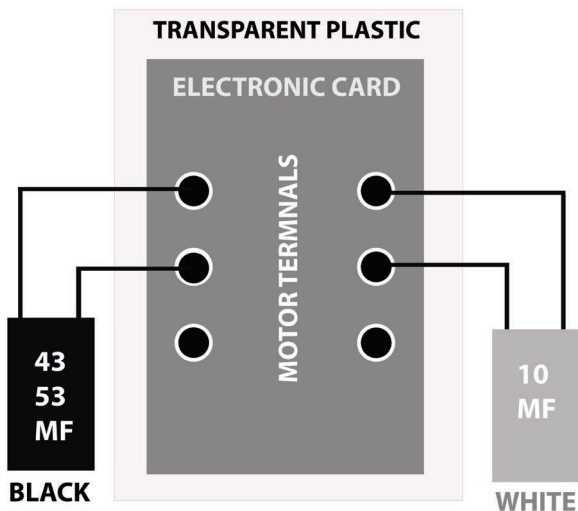
Step 3

## CARD SCHEME AND FEATURES



The electronic card in the content is produced for Remak Gearbox and it is forbidden to imitate it. Mercury, which is harmful to animal health, has not been used in order to perform the sensor task.

## ELECTRONIC CARD ASSEMBLY SCHEME



## CARD SCHEME FEATURES

After the animal detects the angle with the contact with the brush, the card activates the engine and the Automatic Animal Scratch Brush is activated.

Detection of the animal leaving the brush and when it reaches the flat position, the brush stops after 10 seconds.

In case of a tail jam, it detects the tail and goes to the stop position and then turns the tail in the opposite direction if it is jammed and releases the tail.

In case of any leakage current, to prevent the animal from being exposed to high current by cutting electricity.

## MATTERS NEEDING ATTENTION

The Animal Scratch Card should be inserted exactly as shown in the diagram. Otherwise, your card may be damaged and become inoperable as a result of different teams. Any application that takes place apart from the user manual instructions out of warranty as a result of user error.

**IMPORTANT:** In case of any circumstance, if the user opens the motor box, there is a plastic protector between the motor pins and electronic card. The plastic protector is not a trash! So please do not remove it.

## MACHINE INSTALLATION



Wall Mounting M10 is mounted with 4 steel dowels. Make sure the dowels and screw are long enough. Otherwise, the machine and the animal may be damaged.

## POLE MOUNTING



Perform the mounting with a clamp suitable for the diameter of your pole. Clamp nuts should be tightened strongly to prevent the machine from sliding over the pole and to prevent accidents. Otherwise, the machine and the animal may be damaged.

## TROUBLESHOOTING (FAQ)

TROUBLE	REASON	SOLUTION
Different sounds coming constantly	Bearings may be damaged in the form of wear noise.	Change the bearings. Check the gearbox oil.
Noise from the motor section	A impact to the motor during transportation, the propeller rubbing against the motor bowl due to the change of the position of the bowl behind the motor.	Returning the motor bowl clips on the back of the motor to the normal position.
Heating occurs in the mechanical system	Conversion of friction force resulting from any compression in the motor or gearbox into heat energy.	Correction of the propeller bowl on the back of the engine. Checking the gearbox rotating assembly
Heat occurs in the motor part	Any current change in the electrical installation causes the motor to draw too much current and as a result, the motor is warming up.	Electrical installation and values, to be checked by the expert.
Oil leakage	Cracking of the gearbox body. High pressure in the gearbox. Tearing occurring in reducer seals.	Replace packings and plugs. Contact Remak Gearbox.
Burning the Animal Scratch card inside the engine	Touching a different place on the body and burning it as a result of incorrectly connecting the electronic card. High current or energy input outside the range specified by high electrical values.	Replacing the board, mounting it inside the motor as shown in the installation manual and checking the electrical installation by the expert.
Brush drops	Loose mounting of the brush nuts on the bearing spindle.	Tightening the brush nuts on the gearbox bearing shaft more firmly.
Electric motor not working	No energy to the engine. The software card does not detect motion.	Checking the energy to the motor. Installing the electronic software board assembly inside the motor correctly.
Engine running but brush not turning	The bearing between the gearbox and the brush does not transmit the motion.	Determination of where the problem is coming from and reaching to Remak Gearbox for technical support.

## MACHINE CONTROL TABLE

Control Section	Cleaning / Maintenance	Control	Change
Electric motor	Wipe cleaning after visual inspection with 1 month interval	Every week	-
Electric cables	Wipe cleaning after visual inspection with 1 month interval	Every day	-
Gearbox	Wipe cleaning after visual inspection with 1 month interval	Every week	-
Gearbox oil change	-	-	1 Year
Brushes	Wipe cleaning after visual inspection with 1 month interval	Every week	6 month
Electronic Card	-	Every week	-
Connection bolts	-	Every week	-

## WARRANTY CONDITIONS

- Warranty of 2 (two) years against the manufacturing defects of REMAK Gearbox branded products provided that the principles, warnings and standards specified in the user manual are complied with.
- The time elapsed in repairs to be made within the warranty period is added to the warranty period.
- The warranty period of the goods replaced during the warranty application is limited to the remaining warranty period of the purchased goods.
- The warranty period; commodity starts from the delivery date to the firm and the warranty period is 2 (two) years from the delivery date.
- Delivery costs belong to the buyer requesting warranty coverage.
- In accordance with the Law No. 4077 on the Protection of Consumers and the Communiqué on the Principles of Application of the Guarantee Certificate put into effect based on this Law, the use of this Warranty Certificate. Permission by the Republic of Turkey Ministry of Science, Industry and Technology, General Directorate of Protection of Consumers and Competition.

## GENERAL ISSUES EXCEPT OF THE WARRANTY:

- Damages and malfunctions resulting from misuse and misuse of the User Manual.
- Damages and malfunctions caused by incorrect type selection.
- Failure to install the equipment in accordance with the assembly picture in the user manual.
- Voltage drop or excess; use of an ungrounded outlet; damage and malfunctions from faulty electrical installations,
- Damages and failures caused by transportation, lowering, loading, storage, external physical (crash, crash, breaking) and chemical factors after delivery of the device
- Environmental factors (earthquake, fire, flood, flooding, lightning drop, moisture, frost exposure, oil-free operation) damages.



# WARRANTY CERTIFICATE

Our product, which has the following information, is under warranty for 2 (two) years and / or the value determined by the measurement unit determined by the Republic of Turkey Ministry.

## Warranty Statement

Manufacturer Company Name: Remak Redüktör Mak. San. Ltd. Şti.

Main Factory Address: Kemalpaşa Organized Industrial Zone / Kuyucak Yolu

No: 211 Kemalpaşa / İzmir

Phone: +90 (232) 479 68 48 / +90 (232) 479 68 49

Product Name: Automatic Animal Scratching Machine

Brand : Cow Comfort

Origin: Turkey / İzmir

Model : V1

Year of manufacture:

Serial Number :

Delivery Date:

Warranty Period: 2 Years

Average Repair Time: 20 Business Days (International)



Dealer Branch Stamp:

Manufacturer Company Stamp: